



**WELCOME TO**  
**Ashdownhouse**

*MIT's oldest and newest graduate residence*

## Orientation Newsletter 2016

- 01 Welcoming Letters
- 02 Orientation Calendar
- 03 Ashdown FUN
- 04 Facilities and Surroundings
- 05 Helping the Environment
- 06 Ashdown Rules
- 07 Volunteering @ Ashdown
- 08 Need Help?

What events can I enjoy at Ashdown?  
Who can I turn to when I need help?  
How can I contribute in volunteering?  
What if I get lost?  
Where is the free food and beer?  
What does it mean to live in Ashdown?  
.....  
Excited? Confused?  
That's what orientation webpage is for.  
Find links, maps and contacts,  
and remember: there is a lot more to explore!



*Housemaster Adam Berinsky takes part in Chocolate Fountain Night at Ashdown.*

## 01. Welcoming Letters

---

### *From Heads of House*

---

Dear Ashdown Residents,

Welcome (Back) to Ashdown as we approach the Fall 2016 semester! We hope your summer was relaxing and/or productive. As the Heads of Ashdown House, we would like to extend a warm welcome to the many new residents of the community who have joined us in the past month. We have enjoyed the quiet, relaxed pace of summer life at Ashdown but we are excited to enter our 4<sup>th</sup> academic year as Heads of Ashdown. We are eager to usher in a new school year, a new group of residents, and a new slate of activities to share together.



We Heads of Ashdown House have the privilege of living with you here at Ashdown. Allow us to introduce ourselves: Adam, a professor in Political Science, studies public opinion and political behavior. Deirdre is a licensed clinical psychologist who works at Boston Children’s Hospital. We have two children—Benjamin, 11, and Lila, 8. We are joined here in Ashdown by Associate Heads of Ashdown House, the Roman family. Yuriy, an associate professor in Chemical Engineering, specializes in heterogeneous catalysis. Katie, an MD, teaches at Bentley University. Yuriy and Katie have six young children: Max, age 9; Dante, age 7; Apolo, age 5, and 2-year-old triplets, Stella, Bruno, and Xander. The eight “House Kids” of Ashdown enjoy living with and interacting with our grad student residents, so we hope you will get to know them as well as the adults of the Heads of House families.

---



Perhaps you wonder what we do here in the residence? As Heads of House we strive to be a part of life at Ashdown in many ways. We host our own events to help foster the sense of community that makes Ashdown the special place that it is. We attend many of the other events that go on in the dorm so we can get to know as many residents as possible. We work closely with the Ashdown House Executive Committee (AHEC) to help them with the daily operations of life in this large student community. We are also here to help residents solve problems or

crises, large or small, whether these are related to life at Ashdown or not. We are called upon by residents to discuss ways to live more peacefully with roommates, to help manage stress or deal with academic challenges, or to help find resources on the MIT campus or beyond.

There will be many special events within Ashdown during Orientation, so please check the events calendars and come out to get to know your fellow residents! For example, we hope you'll join us when we sponsor a trip to a Red Sox game later this month. In addition to Orientation activities we hope to see you throughout the year. The students on the Executive Committee and your house officers work hard to plan interesting and fun events. Be sure to join us on Thursdays from 9 to 10 pm in the Hulsizer Room (First Floor) for Coffee Hour. Coffee Hour has been an Ashdown tradition for over 40 years, a time to meet other residents and socialize with friends. Ashdown Sunday brunch is a popular monthly event with great food. Deirdre will be collaborating with MIT student services to provide some in house programs on wellness throughout the year. Our in house residential scholars work closely with Katie and our residential scholar coordinator to provide some great cultural programming. We hope you will join us at these and other events so that we can get to know each other and we can serve as resources for you.

One of the things that makes Ashdown House feel like home is the active participation by so many residents in House activities. We hope that you will become involved in the many social and cultural events here. Being an active part of the Ashdown community is the best way to help build

that community and feel truly at home here. Welcome to the family!

Prof. Adam Berinsky, Dr. Deirdre Logan, Prof. Yuriy Roman and Dr. Katie Roman  
**Heads of Ashdown House**

---



*Residents snatch up fruit, pancakes, and other foods at Brunch*

---

## *From the House Manager*

---



Hello everyone and welcome to Ashdown, NW35! The following is some information regarding housekeeping and maintenance. My staff and I are committed to maintaining your comfort and safety here at Ashdown.

- **Maintenance Mechanic:** John Gallagher. John will take care of any maintenance issues, such as clogged toilets, broken window shades, common area repairs etc. If you have any wall hangings/pictures, please contact John and he will install for you. The link for dorm repairs: [https://atlas.mit.edu/atlas/Main.action;jsessionid=649B909CF5E01FBB3FE14286E9437243?tab=home&sub=group\\_servreq](https://atlas.mit.edu/atlas/Main.action;jsessionid=649B909CF5E01FBB3FE14286E9437243?tab=home&sub=group_servreq)
- **Evening/Night/Weekend repair requests** – Call “FIXIT” 617-253 4948 or 617-253-1500
- **Housekeepers:**

Lenny Ferrari First Floor common areas and building 5 floors 1-3

Pablo Lara First floor common and residential areas

Jim Diaz Residential/Common areas of floors 2 and 3

Selomit Velez Residential/Common areas of floors 4 and 5

- **Areas of Responsibility:**

### Trash/Recycling

Our housekeepers will collect your trash and recycling daily. Please leave your tied up trash bag and recycling outside your door in the common hallway (no earlier than 9:00 PM please) and the housekeepers will take it away in the morning. They will also leave fresh trash bags. Do not put out your trash bins, only bags please. Recycling bins may be put out if you like.

## Cleaning

Our housekeepers will clean all common areas: Common function rooms, common hallways, lounges, public/floor kitchens, stairways, etc.

*Our housekeepers will not be cleaning inside any dorm rooms, suites or apartments unless vacant*

### Summer exception as follows:

Once a year (summer), our staff will clean bathrooms and kitchens in ALL suites and apartments. Apartments and bedrooms in suites will be cleaned as they become vacant to accommodate new residents.

### Residents are Responsible for:

Keeping your bedrooms/bathrooms/suites clean.

Stocking your own toilet tissue, paper towels and cleaning supplies (we have vacuums available to borrow at the front desk)

### Recommended Cleaning Supplies:

We recommend “green” cleaning supplies such as Simple Green products which are widely available.

Please do not use abrasives, steel wool, etc. Soft Scrub may be used for the sinks.

- **We value your feedback.**

If you have any comments or concerns, positive or negative, we want to hear them. I am available Monday through Friday, 7:30 – 3:30. Feel free to call or e-mail, and my door is always open.

- **HVAC System**

During the warm seasons our system is designed to provide A/C when the outside air temp reaches 70F and maintains it for four consecutive hours. In the cool/cold season the outside air must drop to 65F for 4 hours before the heat turns on.

Thermostats: Set the desired temperature, press the “hand/finger” button and be sure the thermostat is set to “auto” to maintain your desired temperature. **Do not turn your heat off when the outside temp is 40F or lower, keep the temp at least 60F.** Doing so can result in a burst pipe.

- **Fire Safety**

If your smoke detector sounds while you are cooking, please do not open the hallway door. Shut off your burner/oven and open the windows. Allowing smoke into the hallway will trigger a building wide alarm and summon the Fire Department. **Do not ever tamper**

with the smoke detectors or alarm horns as doing so is a violation of Housing's life safety policies and disciplinary action will be taken.

Again, welcome to Ashdown!

Denise Lanfranchi

Ashdown House Manager

617-253-2963

[dlan@mit.edu](mailto:dlan@mit.edu)

---



*If you would like to play some board games, keep an eye out for announcements on the [ashdown@mit.edu](mailto:ashdown@mit.edu) list.*



---

From *Thirsty Ear* management

---



The Thirsty Ear Executive Committee (TEEC) is an ASA recognized, MIT funded student organization dedicated to building community around and providing student leadership for our favorite campus pub, the Thirsty Ear (located right in Ashdown, adjacent to the Hulsizer Room).



Programming at the Pub includes:

---

- **Wednesday's Karaoke Night** - A student host prepares the bar for a night of music, accepts song requests from aspiring stars, and manages the audiovisual system for the evening.
  - **Tuesday's Trivia Night** - Teams of 4-8 students answer six rounds of questions in categories such as sports, TV/movies, culture, music, history, science, and even MIT in a fun and relaxed environment. A student trivia host creates questions and serves as MC for the evening.
  - **Monday's Sports Night** - Discounted wings special: 5 for \$1. TEEC schedules welcoming, educational introductions to sports as seasons begin and selects events to be shown each evening. **Sports Night** is sponsored by the Graduate Student Life Grants and GradRat.
-

- **Monthly Comedy Night** - TEEC arranges entertainment by local improv groups, student standup comics, and professional comedians. **Comedy Night** is sponsored by the Peter de Florez '38 Fund for Humor, the GSC Funding Board, and GradRat.
  - **Regular Flight Nights**, TEEC members select flights of premium beer samples with paired foods for purchase.
  - We also host a variety of other special events, from political debate/election coverage and BBQs (e.g., our annual **Thirsty Ear BBQ** is happening on Sunday, August 28 from 4 PM to 7 PM) to inter-departmental mixers and holiday parties!
- 

TEEC also helps to improve Pub operations, adds to the ambiance of the Pub, helps student groups host events at the Pub, records the Pub's history, and connects with Thirsty Alumni.

To keep the Pub alive and well, we're always looking for new event volunteers, trivia hosts, karaoke jockeys, event coordinators, and officers. To find out more, please contact [teec-officers@mit.edu](mailto:teec-officers@mit.edu). We hope you'll join us at our next monthly meeting!

Sincerely,

**Jordan Romvary**

*Ashdown Resident and*

*Chair, Thirsty Ear Executive Committee*



## 02. Ashdown Orientation Calendar

*Please pay attention to  
emails to [ashdown@mit.edu](mailto:ashdown@mit.edu) and [ashdown-talk@mit.edu](mailto:ashdown-talk@mit.edu)  
for Location Information*

<i>Sat. August 27<sup>th</sup></i>	<i>9-10:30am</i>	<b>Kayak Outing,</b>
<i>Sun Aug. 28<sup>th</sup></i>	<i>10-3pm</i>	<b>IKEA trip</b>
<i>Sun. Aug. 28<sup>th</sup></i>	<i>3-7pm</i>	<b>TEEC BBQ</b>
<i>Thur. Sept. 1<sup>st</sup></i>	<i>4:30-6:30pm</i>	<b>Speed Friending</b>
<i>Sun. Sept. 4<sup>th</sup></i>	<i>12-1pm</i>	<b>Orientation Brunch</b>
<i>Mon. Sept. 5<sup>th</sup></i>	<i>7-9pm</i>	<b>Dessert Night</b>
<i>Tues. Sept. 6<sup>th</sup></i>	<i>6:30-8:30pm</i>	<b>Scavenger Hunt</b>
<i>Thur. Sept. 8<sup>th</sup></i>	<i>9-10pm</i>	<b>Orientation Coffee Hour</b>
<i>Friday Sept. 9<sup>th</sup></i>	<i>8-12am</i>	<b>Dance Party</b>
<i>Sun. Sept. 18<sup>th</sup></i>	<i>1-3pm</i>	<b>Orientation Potluck</b>
<i>Sun. Sept. 18<sup>th</sup></i>	<i>5-8pm</i>	<b>Marvento Duo music lecture</b>

### **Sidney Pacific Events**

*(All location: Sidney Pacific MP Room and Courtyard)*

<i>Fri. Sept. 2<sup>nd</sup></i>	<i>9pm-1am</i>	<b>Sidney Pacific Dance Party</b>
<i>Sat. Sept. 3<sup>rd</sup></i>	<i>12pm-3pm</i>	<b>Sidney Pacific Fall Cultural Festival</b>
<i>Sun. Sept. 4<sup>th</sup></i>	<i>5pm-8pm</i>	<b>Sidney Pacific Orientation BBQ</b>
<i>Sat. Sept. 11<sup>th</sup></i>	<i>12pm-1:30pm</i>	<b>Sidney Pacific Orientation Brunch</b>
<i>Thur. Sept. 8<sup>th</sup></i>	<i>8pm-11pm</i>	<b>Sidney Pacific Games Night</b>
<i>Sat. Sept. 10<sup>th</sup></i>	<i>12pm-5:00pm</i>	<b>Sidney Pacific Plant Sale</b>



## 03. Ashdown FUN

### Coffee Hour | *Thursday, Sept. 8<sup>th</sup>, 9:00 PM @ Hulsizer Room*

Come to the Ashdown Orientation Coffee Hour to meet your fellow residents, chat with friends, and enjoy the free food and drinks. We will provide fruits, cheese, sausage, chips, guacamole (the crowd favorite), hummus and salsa, cake, ice cream, juice, tea, and of course, coffee. Doors open at 9 pm, and we provide food and drinks for the whole hour. All Ashdown residents welcome!



*2015 Ashdown Orientation Coffee Hour*

### Ashdown Brunch | *Sun. Sept. 4<sup>th</sup>, 12-1pm @ Hulsizer Room*

Come to Ashdown Orientation Bruch to meet fellow residents and enjoy a large selection of brunch food. We will have eggs, pancakes, fruit, and a lot more. Food will start being served at 12 PM. Due to new composting rules, we can no longer compost disposable plates and utensils. Therefore, this year we especially encourage residents to bring your own plate and utensils in order to reduce waste.



*2015 Ashdown Orientation Brunch*

### ***Ashdown Dance Party | Friday Sept. 9<sup>th</sup> 8-12am @ Ashdown Courtyard***

Ashdown Dance Party is one of the biggest dorm orientation events and it is a great on campus party before the semester starts getting tough. The dance party provides a great opportunity for new students to bond with their new friends and familiarize themselves with the MIT community. The event will offer free food, a cash-bar, and DJs to provide the perfect setting for students to interact with each other.

### ***Ashdown Open Doors | Late September***

Participate in the Ashdown Open Doors with your roommates by making dishes to share with ~20 people. For the first hour, half of participating rooms will be open and people will come and drop by your awesome apartment to chat and try your food. For the next hour, the other half will be open so you too can participate in running around and exploring Ashdown. You will be reimbursed up to \$25 if you participate in showcasing your apartment and making food.

## [Thirsty Ear Pub](#) | *events vary across week, see [calendar](#)*

At the Thirsty Ear you will find a fun, safe, intellectually stimulating environment where you, as a new grad student, can hang out with your friends or make new ones. At the Thirsty Ear we have a variety of programming to get you through the week, whether it is Sports Night on Mondays with our infamous 10 wings for 2 dollars, our Tuesday's Trivia Night, or Wednesday's Karaoke Night. We also have a kitchen that serves some of the cheapest and most delicious eats this side of the river paired with cheap alcohol.

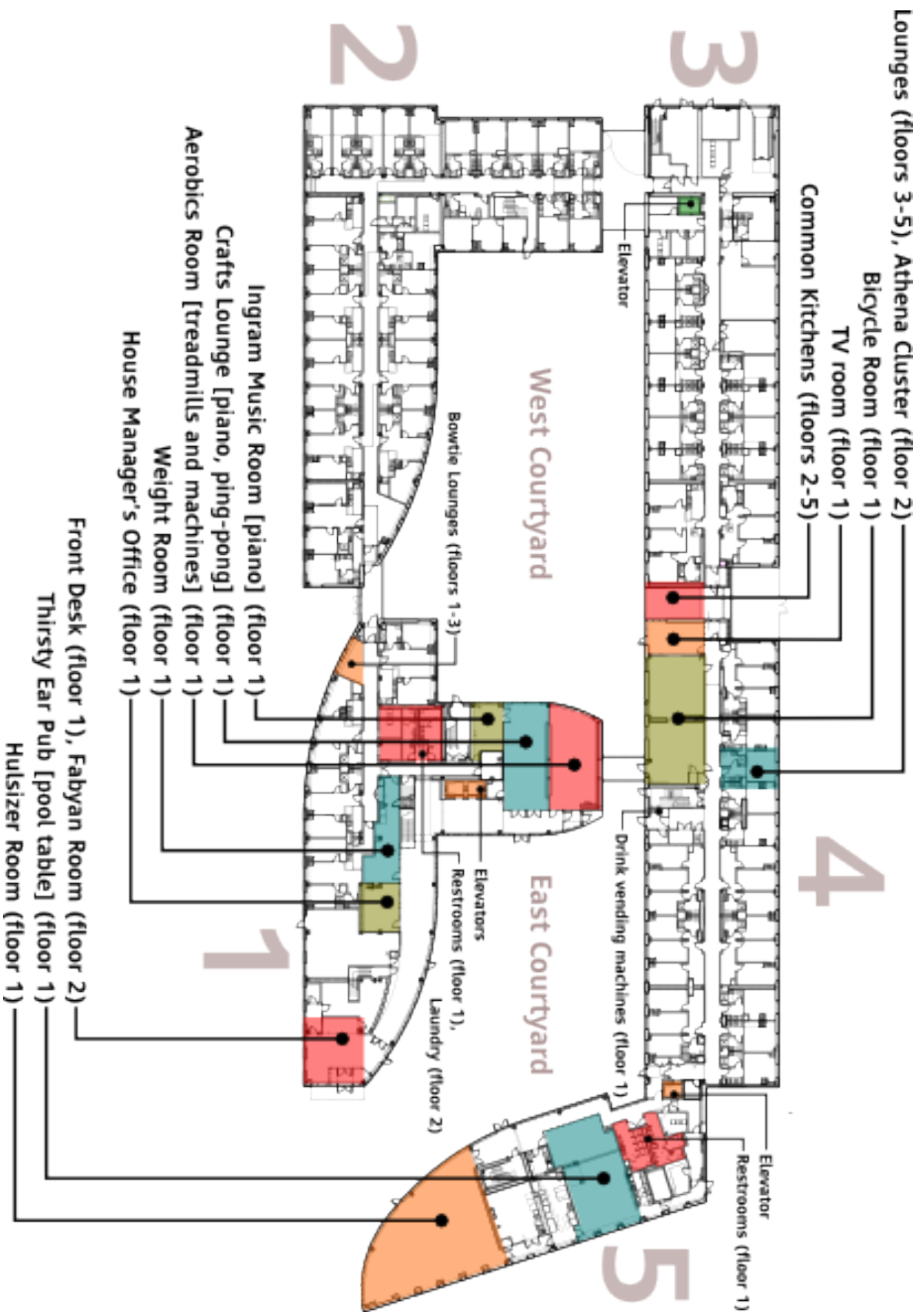


*Thirsty Ear BBQ, 2015 Orientation Event*

## [Communities@Ashdown](#)

Communities@Ashdown are a way to get together with other residents to enjoy a common interest, including: *Book Club @Ashdown, Game Night @Ashdown, Garden @Ashdown, Grilling @Ashdown, Mafia @Ashdown, Minecraft @Ashdown, Spiritual Refreshment @Ashdown*. Contact [ashdown-communities@mit.edu](mailto:ashdown-communities@mit.edu) for more information about starting your own community. We can provide support including advertising, use of the Hulsizer room, and even financial support for some events.

## 04. Facilities and Surroundings



The structure of Ashdown House might be confusing at first, but you will get around soon with the map on previous page. Click [here](#) for the detailed floor plan, and also some [facilities](#) to make life easier.

As you live in the heart of the city of Cambridge, and only a short walk away from historical Boston, rest assured that there is a plenty to explore, eat, and enjoy in the city. However, you've probably just arrived and might need some quick food, snacks, drinks or other basic materials so we have listed just a few local options to get you started. And feel free to ask fellow residents or the [front desk](#) if you need help finding anything.

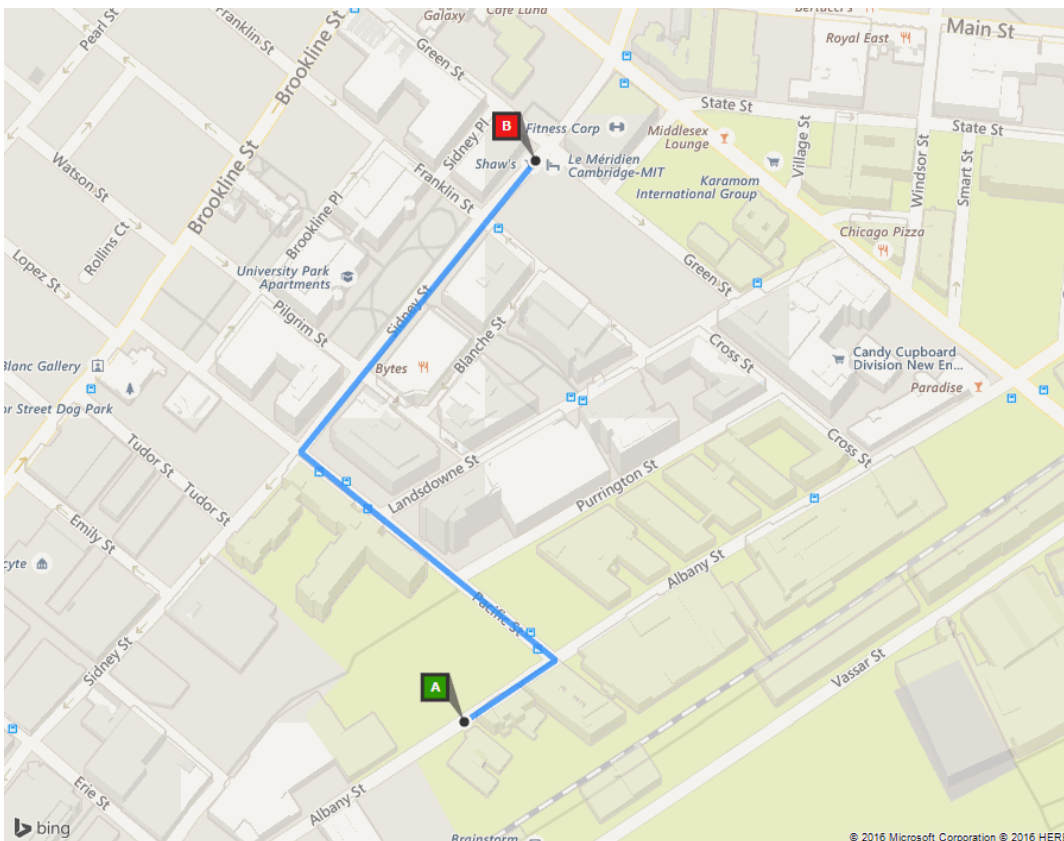
## GROCERY STORES

**Shaw's (Star Market) | *Route: 0.4 mi, 7 min***

20 Sidney St. / Daily 7a - midnight

A general grocery store with just about everything you might need to get started.

<http://www.starmarket.com/>

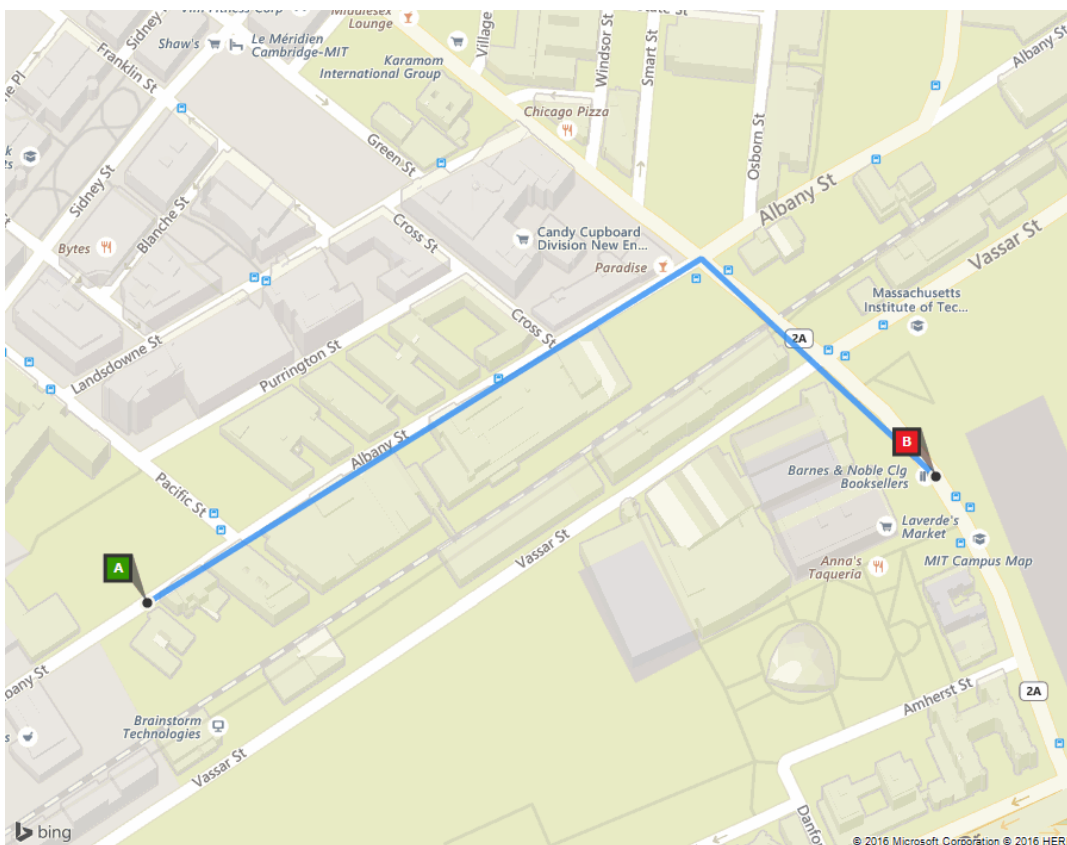




**LaVerde's | Route: 0.5 mi, 9 min**

First floor of building W20 (Student Center) / Daily 24 hours

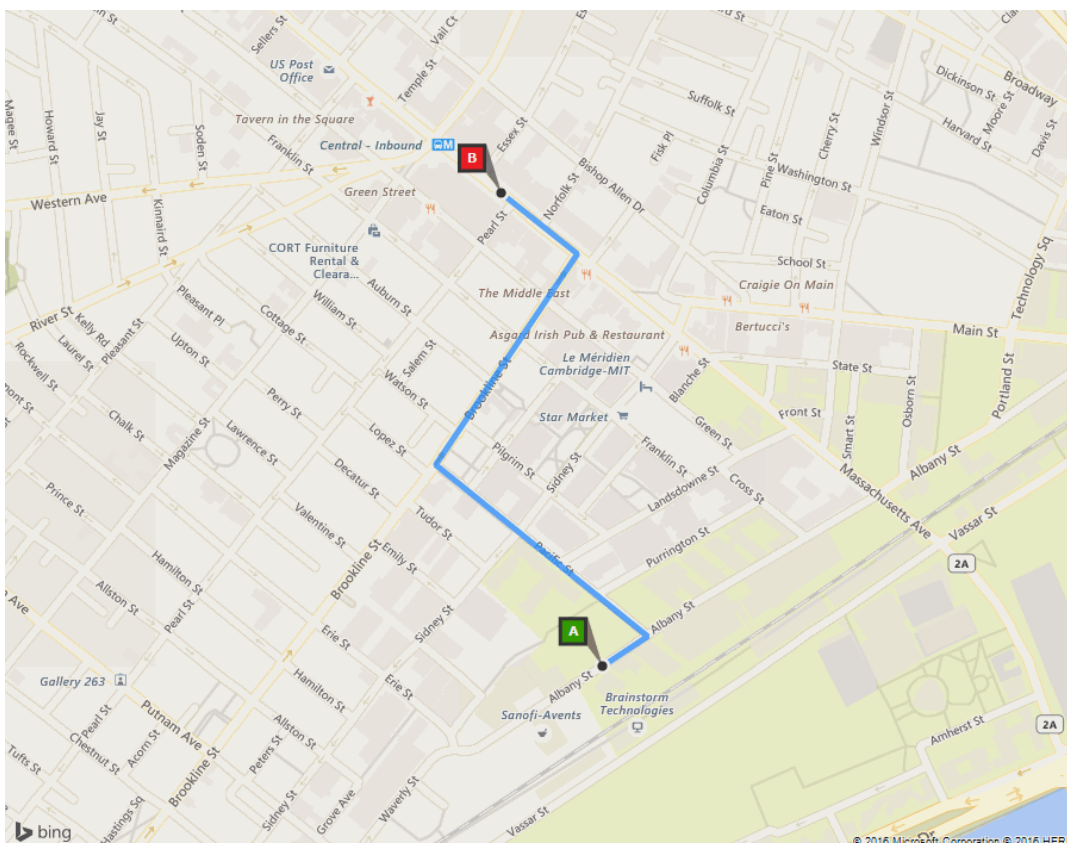
On-campus convenience store. More expensive but useful if you need quick food late at night.



**H-Mart | Route: 0.6 mi, 12 min**

581 Massachusetts Ave / Daily 9a – 9p

Korean supermarket which carries most Asian food materials and spices.



## FAST FOOD AND BARS

**The Thirsty Ear** (See [this page](#) for more information.)

Ashdown House floor 1 | Opens on Mondays through Wednesdays 7 PM to 11 PM

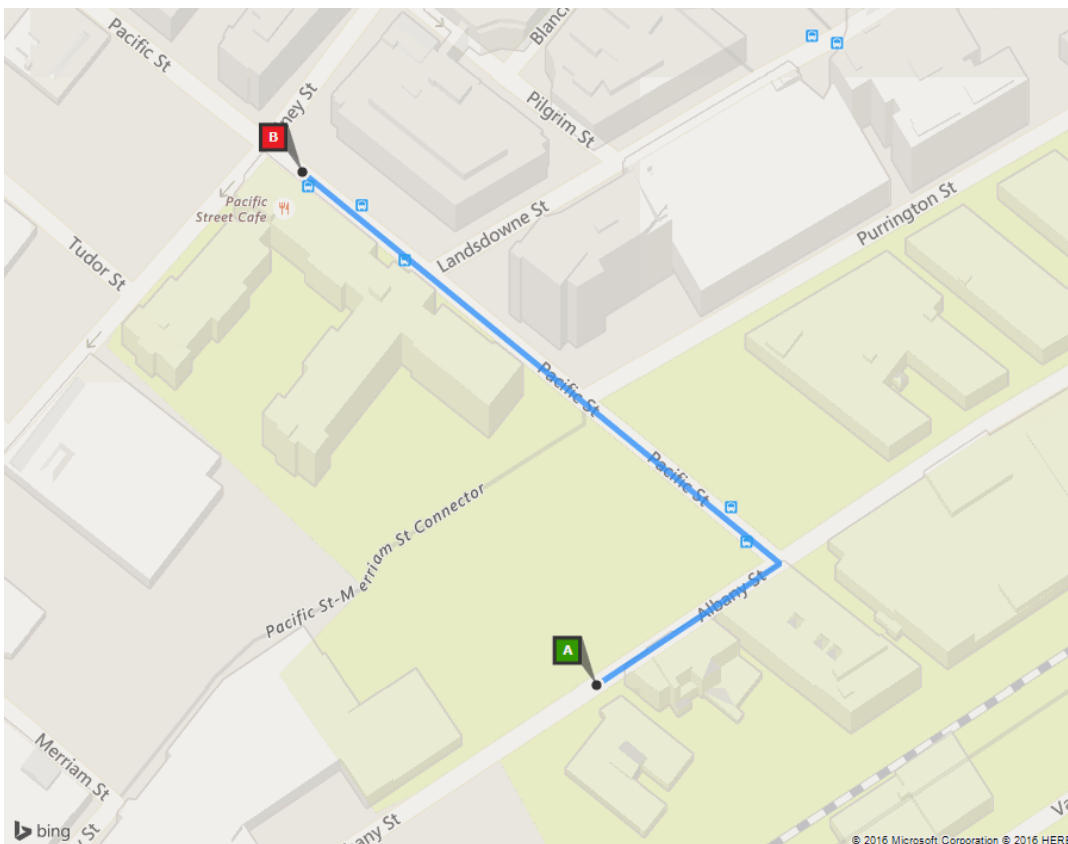
**Anna's Tacqueria, Dunkin' Donuts, Sepal, Shinkansen, Subway, Café Spice**

Building W20 (Student Center) / Hours Vary. Anna's is open latest (7a – 11p)

**Pacific Street Café** | *Route: 0.2 mi, 4 min*

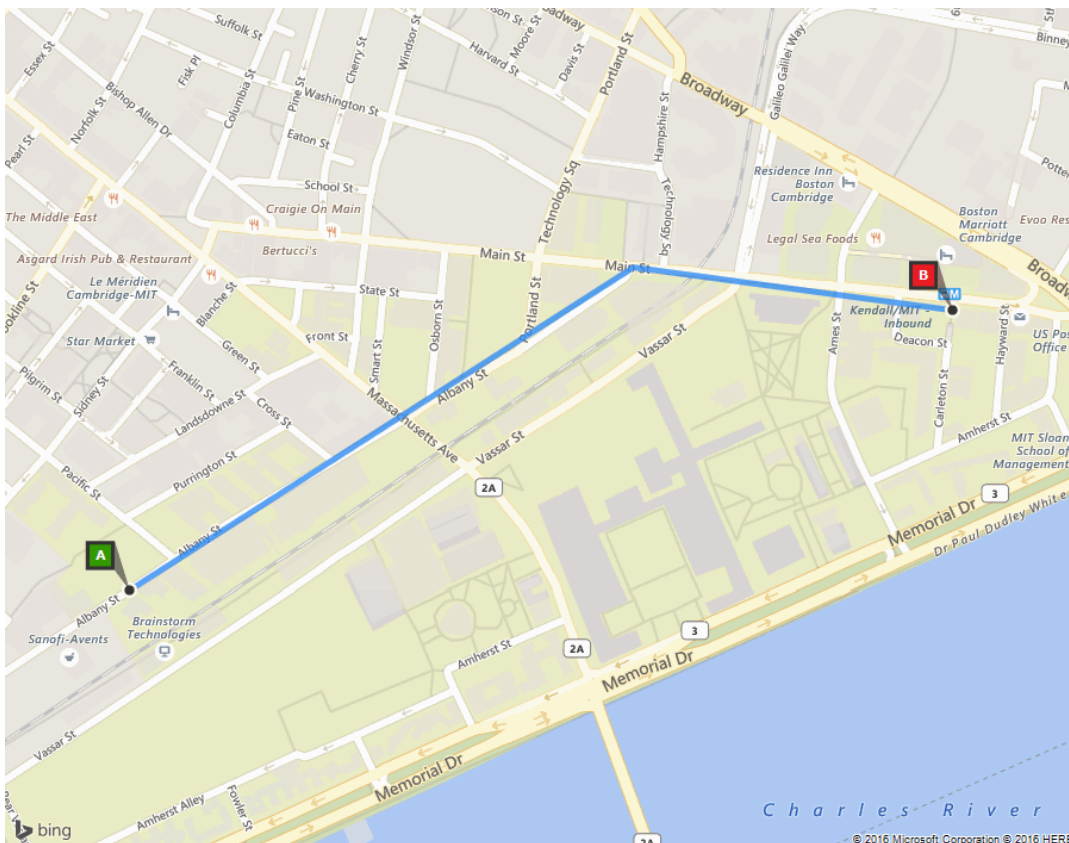
70 Pacific Street / Mon – Fri 7a-6p

(see map below)



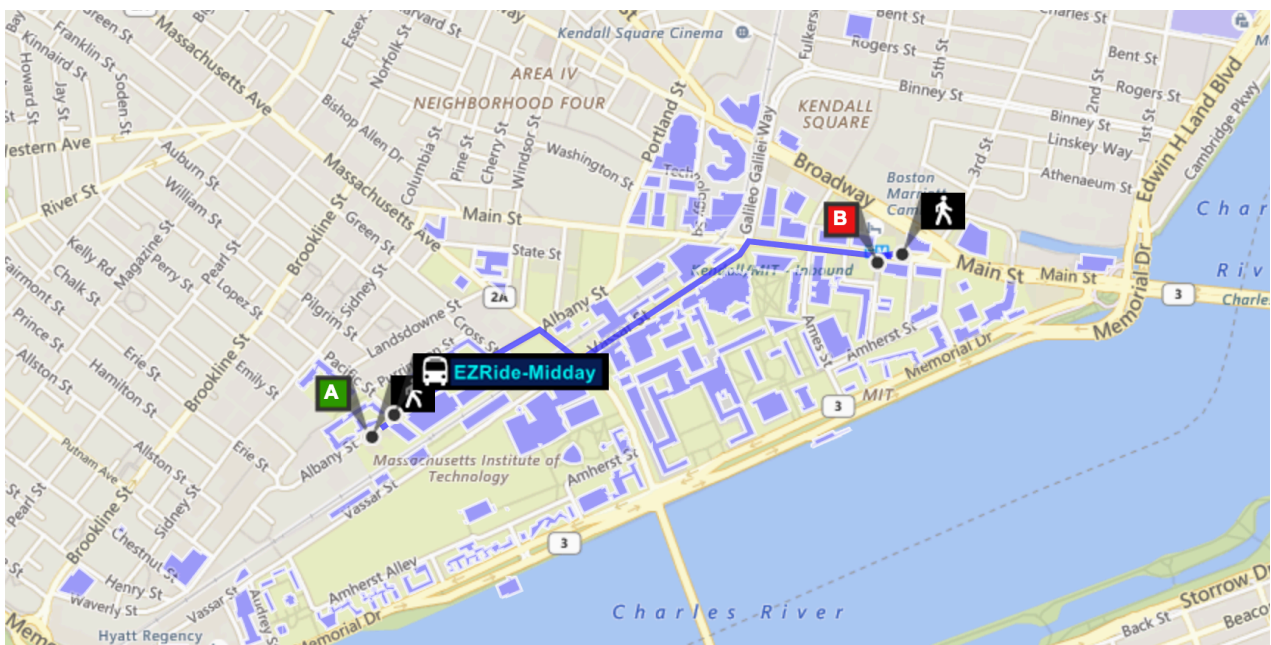
## TRANSPORTATION

MBTA Subway, known as the T, stops are the Central and Kendall stations on the Red Line. Both are approximately a 17-minute (0.9 mi) walk from Ashdown.



MBTA #1 buses ply up and down Massachusetts Avenue, connecting Harvard Square and Boston every 10-20 minutes. These buses (in both directions) stop at the intersection of Albany St. and Massachusetts Avenue, a 5-minute walk from Ashdown House.

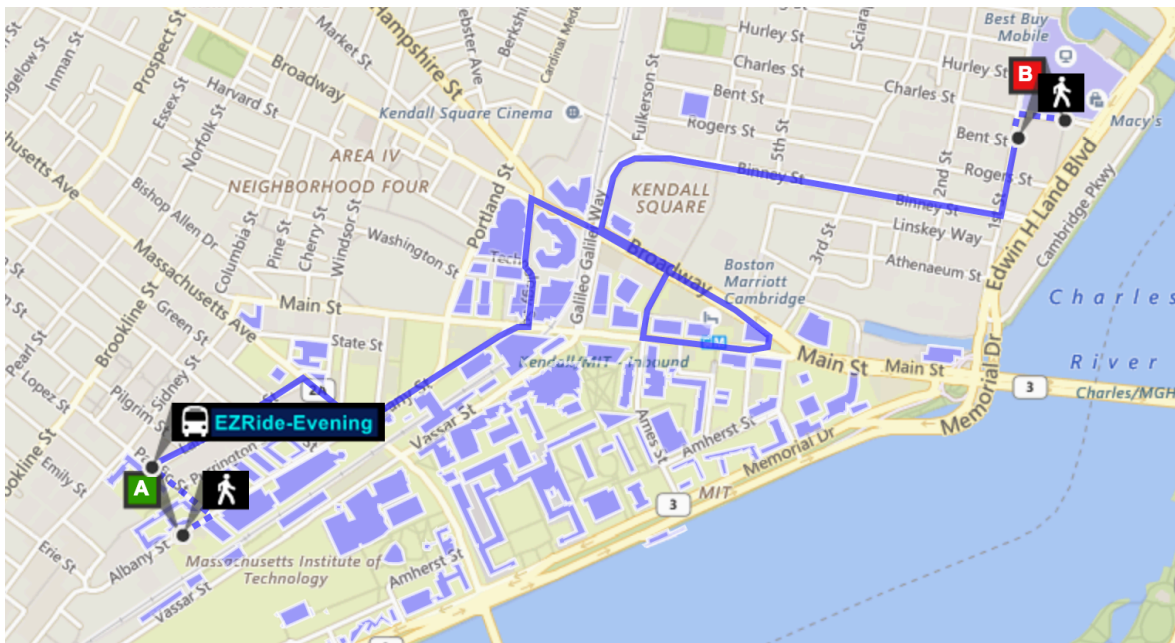
**EZride** shuttles provide service from Ashdown to campus every 10-20 minutes on weekdays from 6:20a to 8:00p. MIT SafeRide Shuttles provide service to/from campus and various nearby location nightly from 6pm to 2am (Sun-Wed) and to 3pm(Thu-Sat). See [here](#) for details routes maps and schedules of the shuttles.



**Bicycling** is a very popular method of transportation among students in Boston. You can use the **Bicycle Storage** within Ashdown house, or help yourself using the **Fix-it Stations** just outside the building. For more information on Bicycling at MIT, see [here](#).

## CELL PHONE

There are four major carriers each with their own separate networks: T-mobile, AT&T, Verizon, and Metro PCS. All four carriers can be found in the [Cambridgeside Galleria](#) mall, where you will also find other shopping outlets as well. To get to the Galleria, take the shuttle departing every 20 minutes from in front of the COOP bookstore at Kendall station. Note that the shuttle only runs till about 7 pm. You can also take EZRide Evening as shown in the map below.



## 05. Helping the Environment

Ashdown isn't just a dorm. It's the home of 500+ future scholars and world leaders like you, and our influences travel well beyond this building. Conserving resources is part of our culture, and we hope you will join us in setting a good example for everyone around us. Your children will thank you!

- **SWITCH OFF** lights and air conditioning if you are the last one to leave any room whether is your bedroom or a common room.
- **BRING PLATES** and utensils to coffee hour, brunch, as all other events serving food
- **PLEASE RECYCLE** items that are labeled as such. Recycling at MIT is easy. We have single-stream recycling, so almost all recycling items can go into the same blue recycle bin in your apartment, or any recycle bin in the common areas. Please do not abuse the recycle bins by putting trash in them, as this will cause everything to be thrown away and hamper the good efforts of others. If you host parties, please inform your guests about what is recyclable as well so that they sort their trash correctly!

### RECYCLABLE

Plastic cups  
Plastic bottles  
Plastic containers (#1-7)  
Paper, magazines, envelopes  
Cardboard boxes  
Glass bottles  
Metal cans  
Aluminum trays, if clean

### NOT RECYCLABLE

Food-soiled and dirty paper  
Paper plates  
Paper cups  
Napkins  
Food waste  
Wood, cloth, other materials  
Styrofoam

### SPECIAL ITEMS

Plastic grocery bags, batteries, broken electronics can be recycled at the front desk.  
  
Compost bins can be found in all common kitchens, and the Hulsizer room during events.

**Please empty any food waste and briefly rinse off and sauce or grease before recycling. Let's Saving the world together!**

## 06. Ashdown Rules

### We HATE rules

...but we do want keep this place cozy and comfortable for your fellow friends, too.



**Quiet hours are 23:00 – 08:00**

Please keep all noise to a minimum during these hours.



**No unattended cooking**

If any heating device is on, you must be present. Rice cookers, toasters, microwaves, and ovens are no exception.



**No smoking including in the courtyards**

Smoking is permitted only outside the gates of Ashdown. Please be mindful that some residents have serious allergies.



**No alcohol in common spaces**

Please enjoy alcoholic drinks in your own private suite/bedroom, or alternatively, visit the Thirsty Ear.



**Keep common spaces clean and do not borrow any common space furniture**

Please show respect to your friends, who may be using these common spaces after you.



**No pets**

... except fish.



**Trash bags**

should be tied and placed outside your door between 9pm–7:30am only. Your recycling bin may be kept outside, if you wish.

Click [here](#) for the detailed Ashdown policy.



## 07. Volunteering @ Ashdown

Do you want to be a bigger part of what makes Ashdown great? Are you looking to make new friends and give back to the community? Do you like getting preference when the free food comes rolling out? Then consider becoming an [Ashdown Volunteer](#)!

While Ashdown has a strong officer corps, we rely on volunteers to make sure our many social offerings go off without a hitch. You'll find requests to volunteer in various emails sent out during the year. If you are interested in volunteering more regularly, you can sign up to our lists through the website. Even if you don't join, you can still volunteer! Volunteering will get you perks, including entries in a prize raffle, special volunteer-only appreciation events, and other bonuses! So join up and take the first step in becoming a bigger part of the Ashdown community!



*Volunteers at 2015 Orientation Brunch*

## 08. Need Help?

### Police and medical emergencies

Dial 100 from a hallway phone, or **(617) 253-1212** from your cell phone. As long as you are near campus, calling the MIT Police directly at this number will be faster than calling 911. Program this number into your phone—you never know when you might need it.

### Room issues and repairs

Please contact our house manager, Denise Lanfranchi ([dlan@mit.edu](mailto:dlan@mit.edu)).

Submit work orders online via ATLAS.

### Community, common space, and event questions

Please e-mail AHEC at [ahec@mit.edu](mailto:ahec@mit.edu).

### Lock-outs

Visit the front desk to get a spare key. If locked out late at night and the night watch is not at desk, call MIT Facilities 24 hours at **(617) 253-1500** from a cell phone or **x31500** from a hallway phone to page the night watch. You will be asked to go to the front desk lobby to meet the night watch.

### Housemasters

Adam Berkinsky ([berinsky@mit.edu](mailto:berinsky@mit.edu)) & Deirdre Logan ([delogan@mit.edu](mailto:delogan@mit.edu))

Yuriy Roman ([yroman@mit.edu](mailto:yroman@mit.edu)) & Katie Roman ([kroman@mit.edu](mailto:kroman@mit.edu))

### Still want to know more about Ashdown?

Visit [ashdown.mit.edu](http://ashdown.mit.edu)!

*This orientation page is brought to you by Ashdown Communication Officer,  
Hongru Cai ([caibr@mit.edu](mailto:caibr@mit.edu)).*